



Code 40 Rail Joiner Instructions

Thank you for purchasing Finetrax Rail Joiners for Code 40 Bullhead or Flat Bottom Rail. Prior to beginning assembly, please read through these instructions thoroughly, and that, prior to assembly, you have the appropriate tools required.

Parts Included

- 1x Sprue of 20x Code 40 Rail Joiners

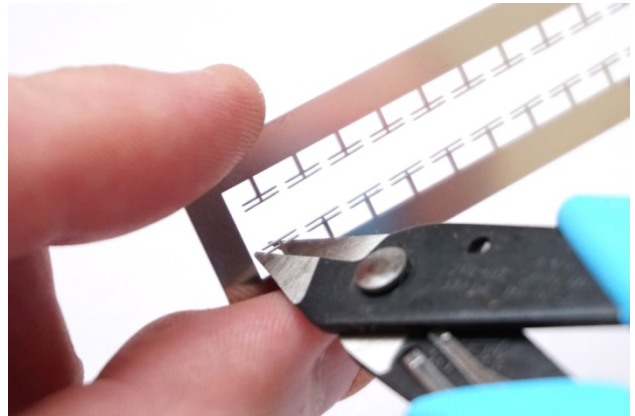
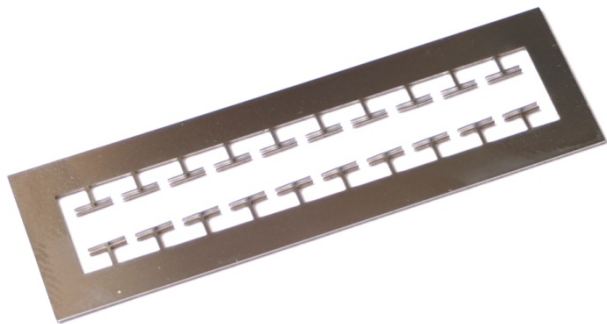
Tools and Materials Required

A few simple tools and facilities will be required to facilitate construction including:

- Thin cutters (Xuron Photo Etch Scissors are perfect) for cutting Rail Joiners off Sprue
- Side Cutters/Flush Cutters (Xuron 170-IIA Micro Shear Ultra Flush Wire Cutters are perfect)
- Flat Nose Pliers
- Small Diamond File
- Tweezers (optional)
- A suitably sized flat surface.
- Eye protective glasses/goggles

Cutting the Rail Joiner off the Sprue

The Rail Joiners come as a Sprue of 20, with each Rail Joiner needing to be cut off from the Sprue. Use a pair of thin cutters (Xuron Photo Etch Scissors are perfect) to cut off a Rail Joiner when required. Cut towards the Sprue and away from the Rail Joiner to prevent damage to it when cutting. It can be useful to do this inside a small plastic bag to prevent from losing the tiny rail Joiner.



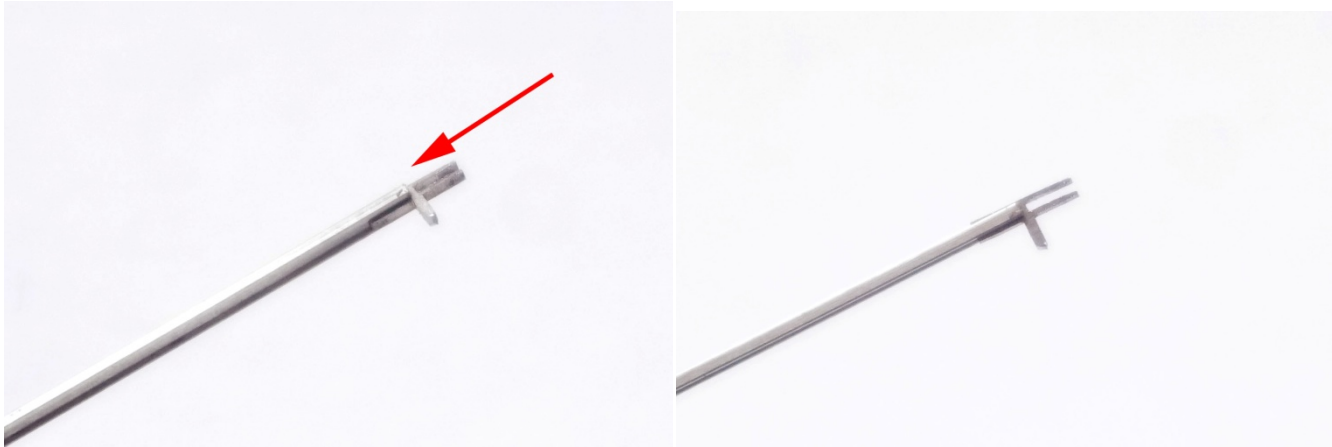
Cleaning up and 'Sizing' the Rail Joiner

Due to the tiny nature of code 40 rail, these Rail Joiners are manufactured with a 'loose fit' and require 'sizing' to the correct fit using a pair of flat nose pliers, while attached to two pieces of scrap Bullhead Rail.

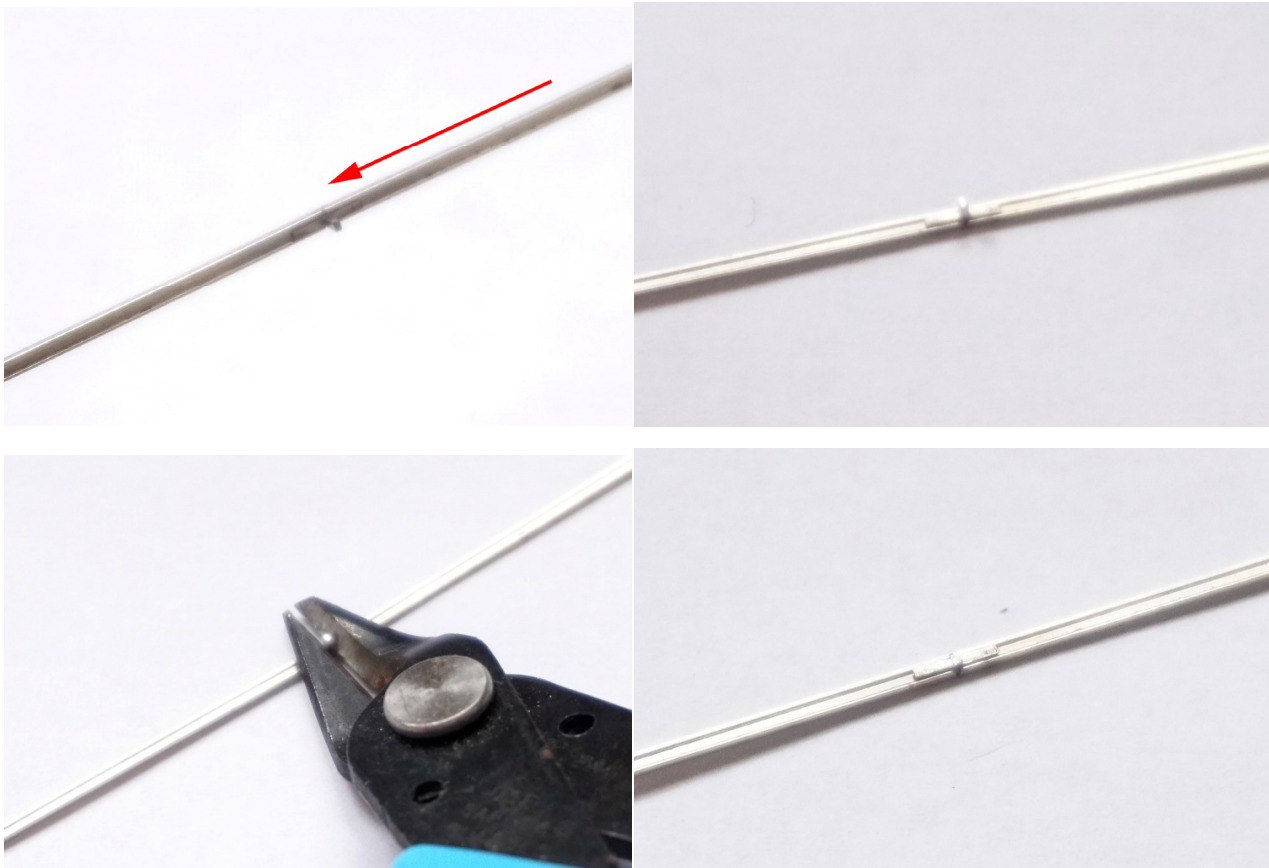
Even if using with Code 40 Flat Bottom rail, the joiner must first be 'sized' to Bullhead Rail.

Follow the steps below to correctly 'size' the Rail Joiner:

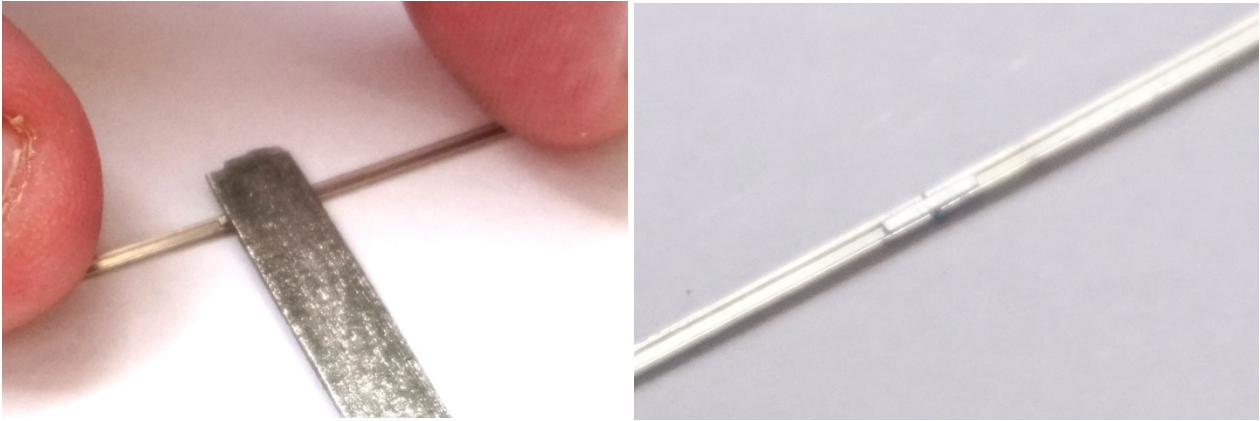
Start by pushing the Rail joiner onto the end of one piece of scrap Bullhead Rail.



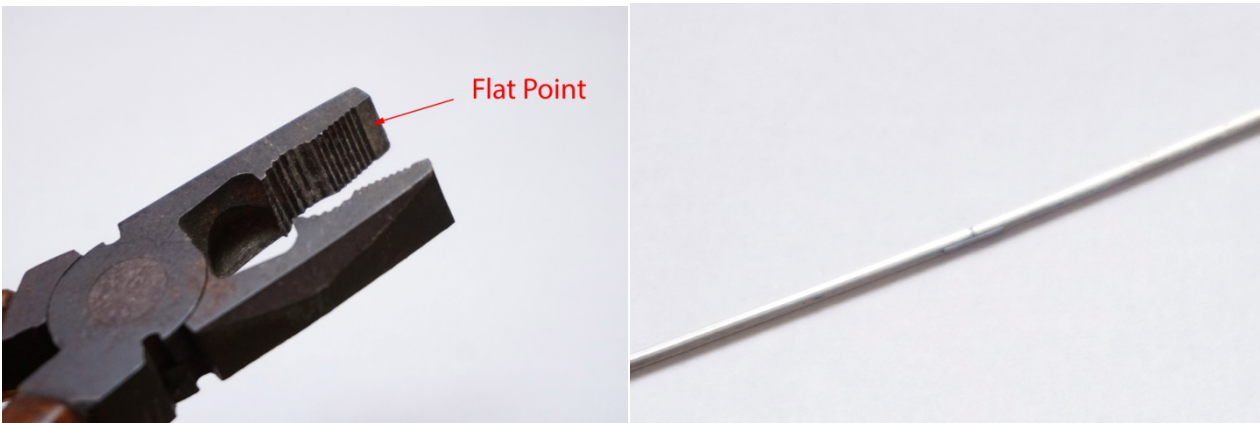
The small leg of metal that was connecting the Rail joiner to the Sprue needs to be cut off. This can be done using a pair of Side/Flush Cutters (Xuron 170-IIA Micro Shear Ultra Flush Wire Cutters are perfect for this). Insert a second piece of scrap Bullhead Rail into the other side of the Rail Joiner and then lay this flat on its side on a suitable work area/table. Then use the Side/Flush Cutters to cut off the metal leg (WARNING: You MUST wear eye protection when doing this as the small leg of metal can easily ping off and into your eye).



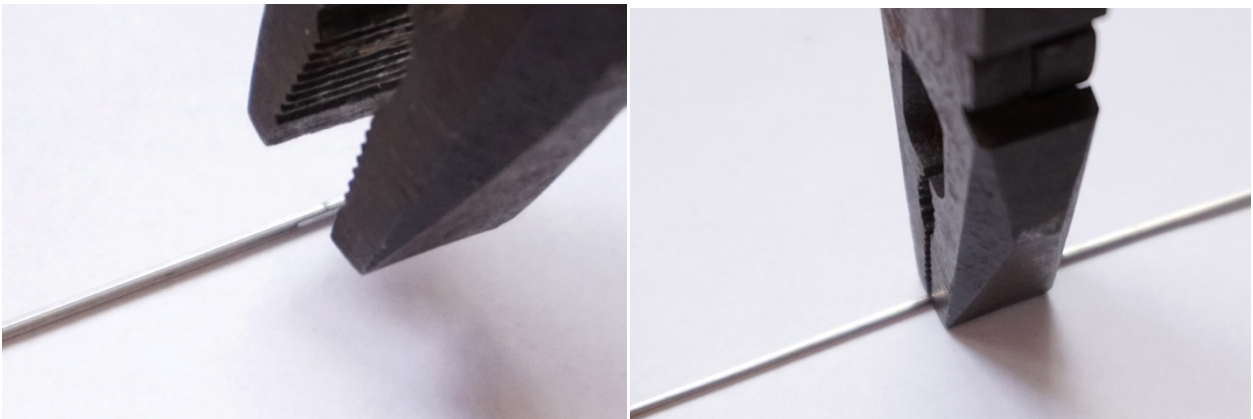
There will still be a slightly raised area left by the Side/Flush Cutters, this will be required to be filed off with a small diamond file:



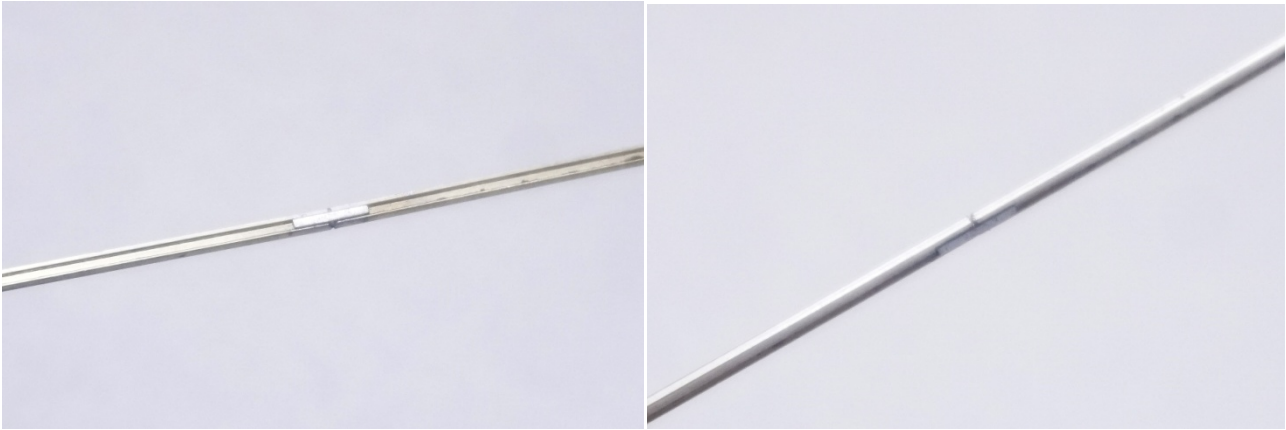
The Rail Joiner must then be 'sized' using a pair of Pliers that has a flat surface at the tip as shown below. Orientate the two pieces of rail 'correct way up' (like they would be on a layout).



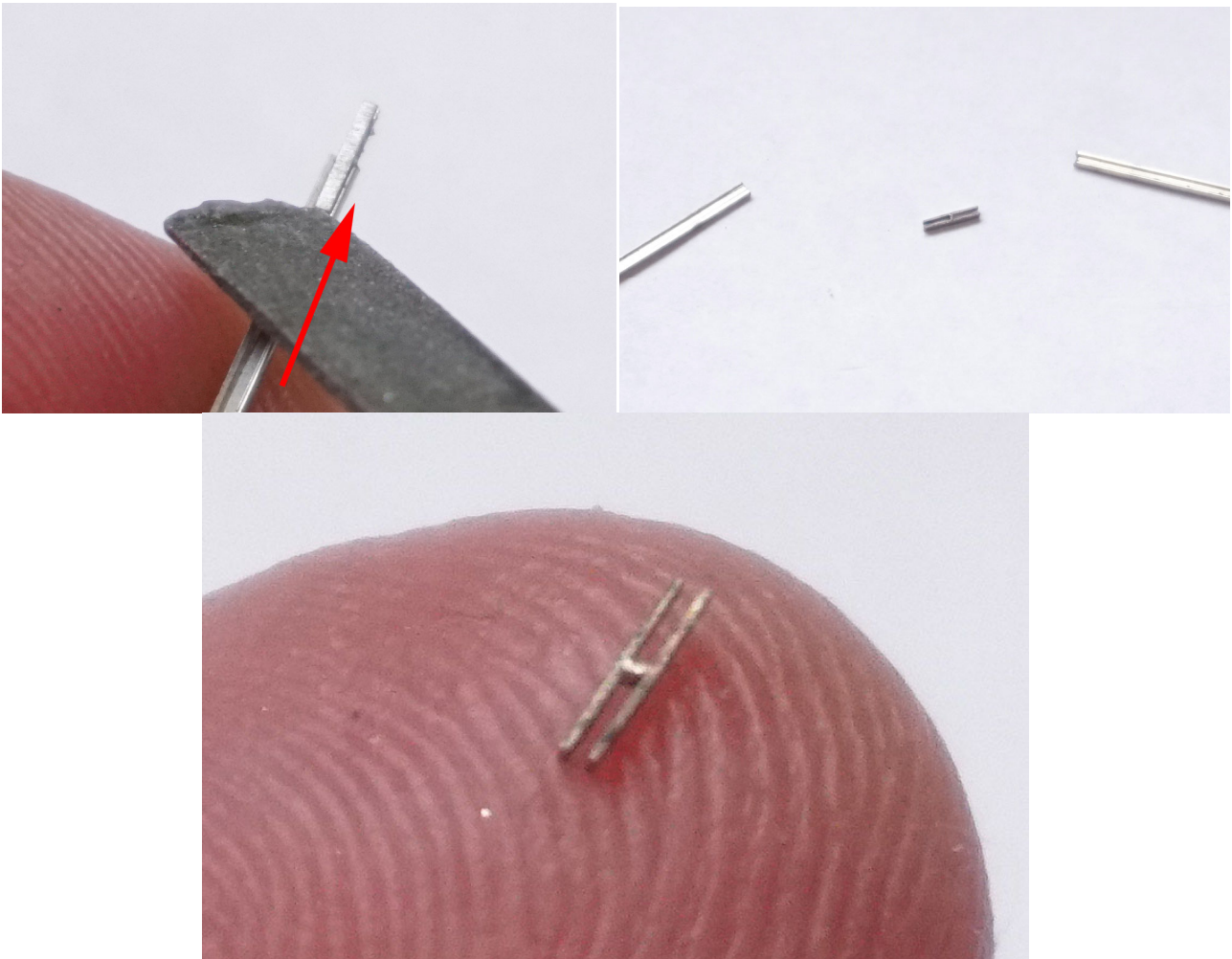
Offer the Pliers up to the sides of the Rail Joiner and give a gentle squeeze onto the rail. This doesn't require much pressure so don't overdo it!



The finished 'sized' Rail Joiner:



The Rail Joiner can now be removed from the scrap pieces of Bullhead rail. Use the edge of a metal tool such as Tweezers or a File to 'push' the Rail Joiner off the scrap piece of Bullhead Rail. This will prevent damage and bending of the Joiner.



The Rail Joiner is now ready to be used. Slide them onto the ends of the track ready for joining to the next piece.



They can even be used to join Bullhead Rail to Flat Bottom Rail

